

Quick Start Guide

FishPod® 5X

BLUETOOTH FISH FINDER



1 Charge the FishPod®



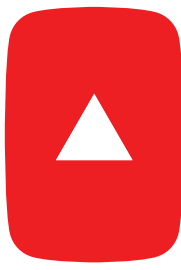
Remove the cap from the top of the FishPod® by twisting counter-clockwise. Plug the round adapter into the center plug and the flat USB connector into any USB compatible adapter. The light on the FishPod® will blink red while it is charging. You can check the charge level in the APP.

2 Download the App



Scan the QR Code above to download the app from the Apple App Store or the Google Play Store. You can also visit either store and search for the app by entering FishPod into the store's search tool.

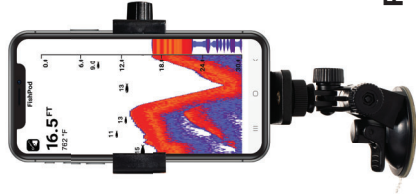
3 Watch the Video



Scan the QR Code to access how to videos, installation & operation manuals, parts & accessories, usage ideas, and a complete list of specifications. You can also visit support.norcross-outdoors.com.



4 Customize for Your Fishing Style at HawkEyeElectronics.com



Suction Cup
Phone Holder



Wrist Mount
Phone Holder



Chest Mount
Phone Holder



Paddlesport
Mount