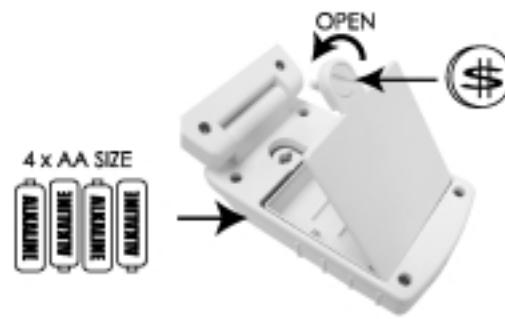


FF3000P - Portable Fish Finder



SPECIFICATIONS:

Depth Capability	99 Feet
Operation Frequency	350 kHz
Display Area	1.5" x 1.8"
Unit Size	1.57" H x 2.75" W x 4.33" L (closed position)
Power	6 volts DC (4 x "AA" Alkaline Batteries)
Transducer Cable Length	35 Feet
Transducer Angle	45 Degrees



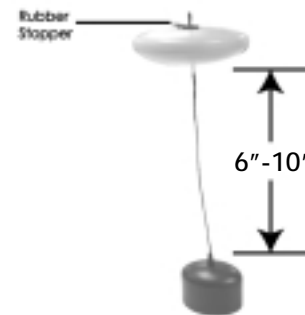
Installing the Batteries

1. Use a coin to open the battery door.
2. Install 4 "AA" batteries (Alkaline). Be certain to align the batteries as per the engravings within the battery compartment.
3. Close the battery door completely before continuing.

**Remove the batteries when not in use.

Connecting the Transducer to the Display Housing

1. Plug the transducer connector in the display housing. Be certain to align the plugs properly before connecting.
2. Lock the connector by turning the locking screws clockwise until tight (do not over tighten).



Adjusting the Transducer Float

The transducer float must be adjusted so that it is between 6 and 10 inches away from the transducer.

1. Pull out the rubber stopper.
2. Adjust float so that it is 6 to 10" from the transducer.
3. Replace the rubber stopper.

Installing the Neck/Safety Strap

Install the neck/safety strap to the hook on the back of the display (located next to the ON/OFF switch).

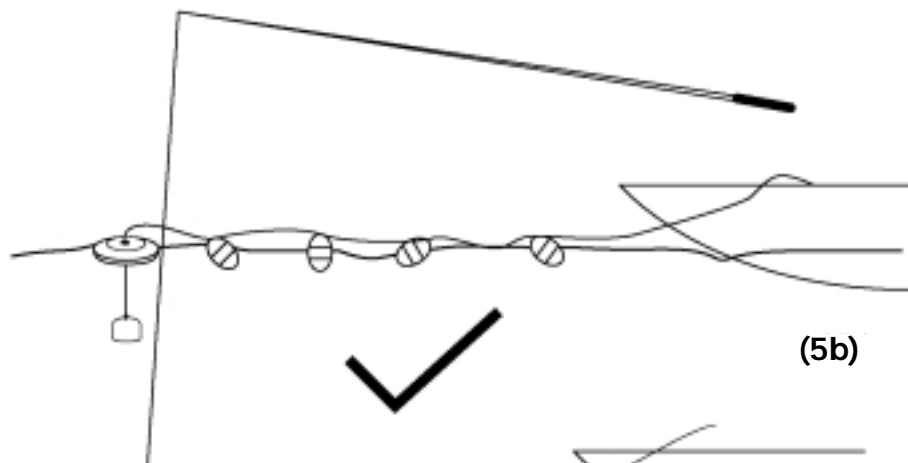
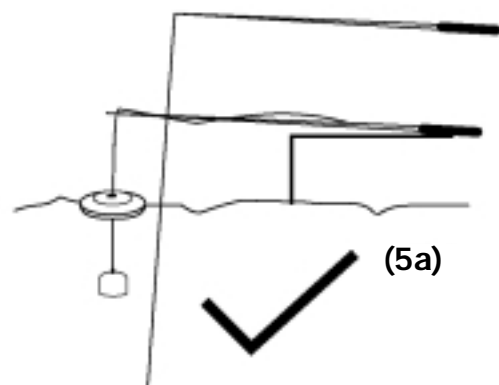


B

SETUP (cont.)

Using the Transducer

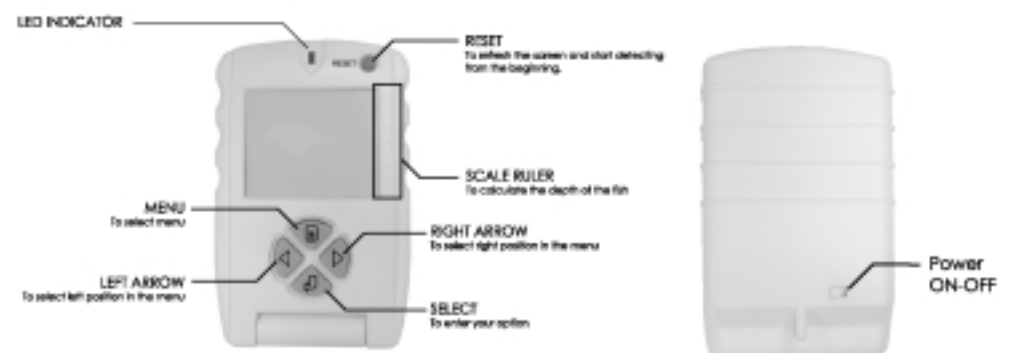
1. Toss the transducer and float assembly into the water at your desired fishing location.
2. Use a pole to guide the transducer to a desirable position (5a) or add floats on the cable to allow the cable to float on top of the water (5b).



Do not allow the cable to sink to the bottom as it may become entangled in debris (5c).

C

OPERATION



The Fish Finder Can Be Fine Tuned for a Variety of Conditions.

- Pressing the "MENU" key accesses the setup.
 - fast blinking represents the field for change by pressing "Select".
 - Exit setup at any time by pressing (M) OR by waiting 3-5 seconds with no action.
- Pressing the "RIGHT and LEFT ARROWS" moves between selections.
- Pressing the "Select" key enters the selection. OR toggles fast blinking feature ON/OFF
 - once Select is pressed the field change is set and the fast blinking will move to adjacent field.

Fishing Zone Selections - ("3-10FT", "10-99F", "AUTO")

The fish finder has 3 fishing modes.

- "3-10FT" - manually sets the fishing zone between 3 and 10 feet.
 - "10-99F" manually sets the fishing zone between 10 and 99 feet.
- Slow Blinking ("3-10F" or "10-99F") represents the depth range currently active
- "AUTO" automatically detects landscape and updates the water depth every 10 seconds.

Note: "AUTO" will remain solid when selected, while the 3-10F or 10-99F will slow blink to indicate the depth range detected by the Auto Detect mode.
(To conserve battery power utilize the manual settings whenever possible.)

Sensitivity Selection - ("SEN HI")

Increases the fish finder's sensitivity. Select "HI" when targeting smaller fish.

Backlight - ()

Increases the visibility of the display in the dark.

Fish Alarm - ()

Sounds an audible alarm when groups of fish are detected.

D

OPERATION (cont.)

Fish Location Scale Indicator

Use the scale indicator to measure the fish's depth location. This can be done by dividing the depth reading by 5. This number represents the value of each bar.

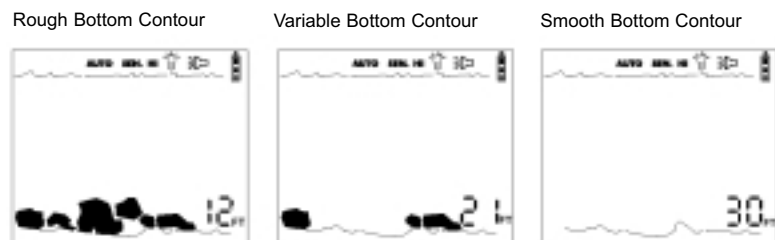
(example, the depth is 10 feet, the fish symbol appears between the first and second line. This means the fish is between 2 and 4 feet)

scale indicator bar



Understanding the Display

The bottom contour, composition, and landscape will be evident on display as a series of "rock" indicators. The more "rock" indicators that appear, the rougher the bottom is. Rough bottom indicators could represent heavy rock or vegetation.



LED

The indicator LED on the Fish Finder will be lighted when the power is on.

Depth Meter

The depth meter on the right bottom corner will appear after the power is on for 3 seconds. The depth meter will be deactivated if the depth exceeds 99 feet.

Audible Alarm

The audible fish alarm sounds when a group of fish appears on the LCD. The size of the fish symbol indicates the size of the fish

E

OPERATION (cont.)

3-10FT
Auto detect
Sensitive high
Light on
Speaker on
Full battery
Big fish
Landscape : ROUGH
Depth : 20ft



Sensitive high
Light off
Speaker on
Full battery
Small fish
Landscape : NORMAL
Depth : 16ft

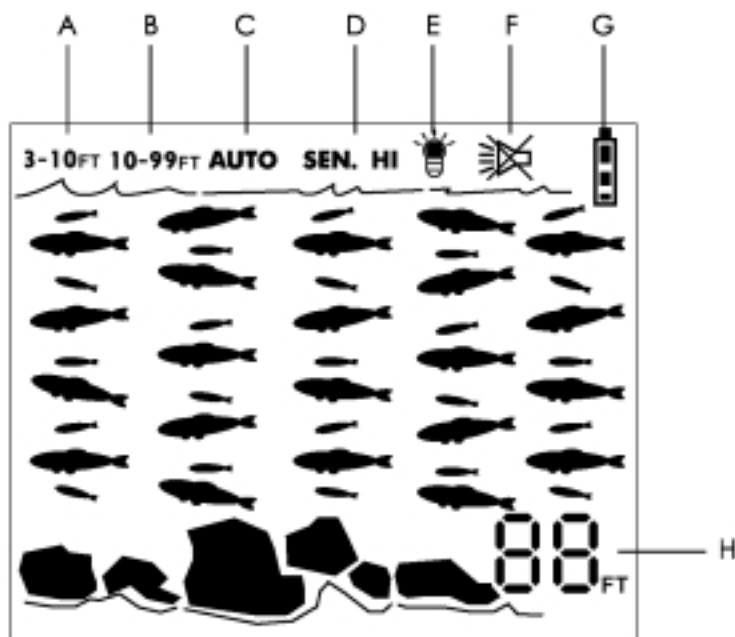


Sensitive high
Light off
Speaker off
Low battery
2 or above fishes
Landscape : SMOOTH
Depth : 3ft



F

OPERATION (cont.)



- A (3-10FT) - Detecting depth between 3-9 feet
- B (10-99FT) - Detecting depth between 9-99 feet
- C (AUTO) - Auto Detect landscape every 10 seconds
- D (SEN. HI)=Sensitivity set to Hi,
(SEN.)=Sensitivity set to Low
- E (💡) - Backlight On
- F (🔊) - Fish Alarm On
(🔇) - Fish Alarm Off
- G (🔋) - Full Battery
(🔋) - Low Battery
(🔋) - Very Low Battery
- H (88) - Depth Meter

G

CARE

Care of Your Fish finder

1. Unscrew the transducer plug screws and remove the plug from the fish finder.
2. Clean the transducer and cable with fresh water and dry-off before storing.
3. Remove the batteries from the fish finder to prevent battery leakage and corrosion.
4. Do not submerge and/or spray the fish finder display/housing with water or use chemicals to clean. If necessary, wipe with a damp cloth.
5. Store the fish finder in the storage bag in a dry place.

Operation Reminders

1. The fish finder may indicate false readings or become unreadable if the fishing area has too much grass or water plants. This condition may be indicated by a steady fish icon across the bottom of the display.
2. Do not operate 2 fish finders within 100 feet of each other as this may produce false readings.
3. When operating the fish finder in murky waters with a soft bottom Sensitivity should be set to "Hi" for more accurate depth information.

H

WARRANTY

To be eligible for warranty coverage your fish finder must have a copy of the Warranty Registration Card on file with NorCross Marine Products, Inc., so be sure to submit the included registration card within 10 days of purchase.

NORCROSS LIMITED WARRANTY

NorCross Marine Products, Inc. warrants, to the original purchaser, this product to be free from defects in materials and workmanship for one year from the date of purchase. If the unit fails to perform as described in the product's written specifications, due to a defect in materials or workmanship, we will repair it free of charge to the customer for parts or labor. The customer, however, is responsible for any costs associated



1629 Prime Court, Suite 800
Orlando, FL 32809
PH: (407) 581-2614
Fax: (407) 422-0501
Toll Free: 888-NorCross
Email: customerservice@norcrossmarine.com

with returning the unit to NorCross. This warranty is void if damage or malfunction is due to abuse, misuse, accident, failure to reasonably maintain, improper installation or use, or unauthorized alteration or repairs. Norcross retains the exclusive right to repair or replace the unit at its sole discretion, and holds this right as the exclusive remedy available to the customer against NorCross for any defect, malfunction, or non-conformity concerning the product, or for any loss or damage resulting from any other cause whatsoever. Norcross will respond to all warranty claims within a reasonable time after receipt of the unit from the original purchaser, with such response time not to exceed thirty days without written notification of delay

to customer.

To obtain warranty service, securely pack the unit, and mail prepaid via insured post to: NorCross Marine Products, Inc., Warranty Department, 1629 Prime Court - Suite 800, Orlando, FL 32809. A copy of the original sales receipt is required as the proof of purchase for warranty repairs. A copy of the Warranty registration card must also be on file with NorCross Marine Products, Inc., so be sure to submit the included registration card within 10 days of purchase. Please be sure to include your name, address, email address, and a daytime phone number within the package.

