

FF3300P & FF3300PX Instruction Manual

Thank you for purchasing the HawkEye™ Portable Fish finder, and welcome to the innovations of NorCross Marine Products, Inc.

ENJOY YOUR FREEDOM...



Before You Fish

Get to know the fishing regulations and habits of the fish that you are targeting by visiting your local tackle center, bait shop, library, or website. A little research can be a valuable lesson, that will allow you to utilize the features of your fish finder, to make fishing more enjoyable for you, and your fishing buddies.

Installing the Batteries

- Use a screw driver to open the battery door by turning the locking screw counter clockwise until the door can be removed (Figure 1)
- Install 4 "AA" batteries. Be certain to align the batteries as per the diagram within the battery compartment.
- Close the battery door completely, and turn the locking screw clockwise until snug before continuing. Be certain not to over-tighten.

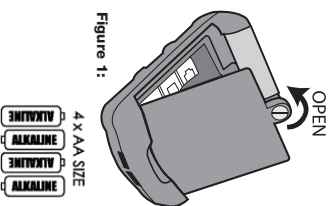


Figure 1:

Installing/Removing the Belt Clip

- To Remove, turn the locking screw on the belt clip until the slot on the screw is unlocked (Figure 3). Pull the belt clip straight off by grasping the clip by the locking screw (Figure 2).
- To Replace repeat step 1 in the reverse order.

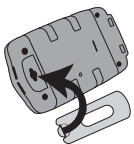


Figure 2:



Figure 3:

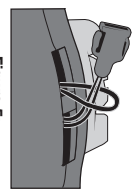


Figure 5:

Fasten the neck/safety strap to the hook built into the display housing by using the included clip. (Figure 5). Use the strap to hang the fish finder from your neck, fasten it to your body, or any object that will prevent accidental damage during operation.

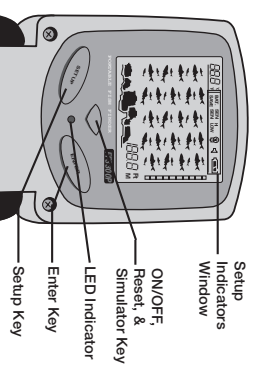


Figure 7:

Refer to Figure 7 to Set the Following Features:

- ### Turning the Power ON/OFF
- To turn the Power ON, PRESS the ON/OFF Key (the LED indicator will light up).
 - To turn the Power OFF, PRESS and HOLD the ON/OFF Key for 3 seconds.
 - During normal operation the screen can be refreshed by pressing the ON/OFF Key. Use this feature if inconsistent readings are evident.
 - The FF3300PX have an automatic power off feature to prevent battery drain if you accidentally leave the unit on. If the depth display reads "---" for 5 minutes, the unit will shut off automatically.

- ### Turning the Simulation Mode ON/OFF
- To turn the simulation mode ON, press and hold the ON/OFF button for 3 seconds while the screen is OFF.
 - To turn the simulation mode off, turn the power off and back on again as per the instructions in the "Turning the Power ON/OFF" Section.
 - (The simulation mode will indicate variable depth, bottom contour, and fish readings on the screen)*
- ### Accessing the Feature Setup
- Press and Hold the SETUP Key for 3 seconds.
 - The BATT. SAVE indicator will blink in the Setup Indicators Window.
 - Cycle through the features by pressing the SETUP key, (the indicator will blink for the current feature to be set)
 - To activate or deactivate a feature press the ENTER key. (When a feature is activated, the indicator will appear)
 - When a feature is deactivated, the indicator will not appear
 - The screen will automatically return to normal operation after 5 seconds if no keys are pressed.

Battery Save Feature

- Battery Save activated will update the display every 10 seconds, which will greatly increase the battery life of the fish finder, but will not give you instant readings. Use feature to preserve battery life only.

Changing The Units of Measure

- Open the battery compartment and move the switch in the upper right corner to the right for feet and to the left for meters.

VirtuView™ LCD ICON DISPLAY

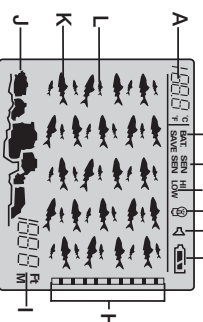


Figure 11:

- A Temperature Readout (FF3300PX Only)
- B Battery Save Feature ON
- C Sensitivity set to High
- D Backlight ON
- E Fish Alarm ON
- F (Full Battery)
- G (Low Battery)
- H (Very Low Battery)
- I Fish Depth Scale
- J Bottom Contour Indicators
- K Large Fish Indicators
- L Small Fish Indicators

Sensitivity Feature

- Low Sensitivity - use this feature to eliminate clutter from the screen when fishing in muddy water, heavy vegetation, or water which contain a lot of debris.
- High Sensitivity - use this feature to detect small fish, fish in deep water, or fish hiding near the bottom

Backlight Feature

- Turning the backlight feature ON will keep the screen illuminated all times. This feature will greatly reduce the battery life of the fish finder, so it should only be used during low light conditions.
- When the backlight feature is OFF, the backlight will still illuminate for 3 seconds when a key is pressed.

Fish Alarm Feature

- The fish alarm sounds when a group of fish are indicated.
- Two distinctive alarm patterns indicate small fish.
- 4 alarm tone bursts indicate large fish.

If you have questions about the operation of this unit please visit our website at www.norcrossmarine.com. If you need further assistance please call us at 888-NorCross Monday-Friday 8 a.m. to 5:30 p.m. Eastern Time

VariableZone™ Temperature Sensing System (FF3300PX)

The FF3300PX's temperature sensor is located in the transducer housing. Adjusting the float level will allow you to view temperature readings at variable depths. Knowing your prey's feeding habits in relation to water temperature will allow you to fish at the exact depth that is optimal for strikes. (Figure 8).

- Pull out the rubber stopper.
- Allow the transducer to sink slowly, (the temperature sensor has a 5 second delay in reacting to changes in temperature.
- Once a desired temperature is indicated, subtract the current DISPLAY DEPTH from the TOTAL DEPTH to determine the depth of the indicated water temperature.

Total Water Depth - Display Depth = Indicated Water Temperature Depth

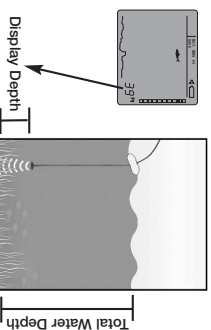


Figure 8:

Obtaining Temperature Readings (FF3300PX)

The temperature sensor is automatically activated when you turn on the display. The Temperature Sensor is located on the bottom of the transducer (Figure 9). Please keep in mind that there is a 5 second delay while the unit calculates the current temperature.

- To obtain air temperature readings, hold the transducer in open air and turn on the display. The current air temperature will be displayed on the LCD (Figure 9).
- To obtain water temperature readings, place the temperature probe into the water and turn on the display. The current water temperature will be displayed on the LCD (Figure 9).
- The FF3300PX will also read the temperature of any object from 14°F (-10°C) to 122°F (50°C) by simply pressing the temperature sensor in the transducer against an object and turning the display on.

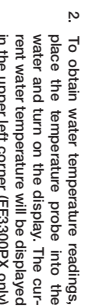


Figure 9:

WARNING: Never press the temperature sensor or the transducer housing against any object which is thought to be hotter than 122°F (50°C) as damage to the transducer may occur.

Installing the Neck/Safety Strap

Fasten the neck/safety strap to the hook built into the display housing by using the included clip. (Figure 5). Use the strap to hang the fish finder from your neck, fasten it to your body, or any object that will prevent accidental damage during operation.

Adjusting the Transducer Float

The transducer float must be adjusted so that it is between a minimum of 6 inches away from the transducer but can be further (Figure 6).

- Pull out the rubber stopper.
- Adjust float so that it is 6 to 10" from the transducer.
- Replace the rubber stopper.

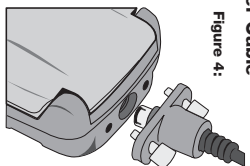


Figure 4:

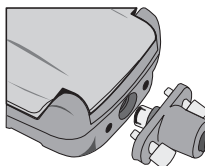


Figure 6:

Using the Transducer

1. Toss the transducer and float assembly into the water at your desired fishing location. To toss, place the transducer and float in your hand, and pitch underhand. **Do not throw the transducer by the cable as this will cause unreparable damage.** Before tossing, be certain that the cable is free from tangles and is not wrapped around anything.

- Use a pole to guide the transducer to a desirable position (Figure 10) or add floats on the cable to allow the cable to float on top of the water (Figure 11).
- To retrieve the transducer and float simply pull in the cable being certain to neatly wind up the excess cable.

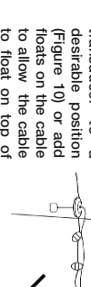


Figure 10:

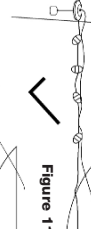


Figure 11:

Do not allow the cable to sink to the bottom as it may become entangled in debris (Figure 12).

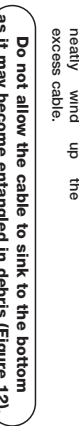


Figure 12:

Using the Fish Finder Thru a Boat Hull?

The FF3300PX's advanced sonar capabilities allows them to "shoot thru" the bottom of a boat or canoe. The hull must be made out of solid fiberglass, or a maximum of 1/8" aluminum, and be in direct contact with the water, with no air pockets. The unit will not work thru wood, plastic, or any composite material.

To "shoot-thru" the hull of a boat, do one of the following (Figure 13)

- place the transducer in .5 inches of water against the hull bottom.
- coat the face of the transducer with petroleum jelly and press it against the hull bottom with a twisting motion.
- place the transducer in a plastic bag that is full of water and place against the hull bottom.
- refer to our website for more advanced instructions.

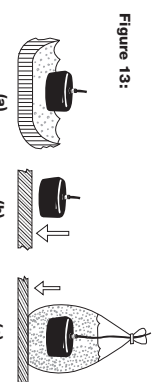


Figure 13:

Understanding the Bottom Contour

The bottom contour, composition, and landscape will be indicated on screen as a series of "rock" indicators. The more "rock" indicators that appear, the rougher the bottom is.

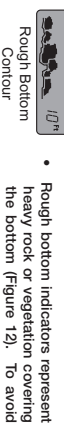


Figure 12:
Rough Bottom Contour

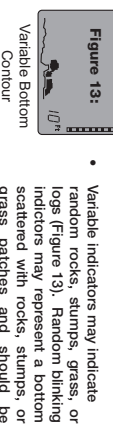


Figure 13:
Variable Bottom Contour

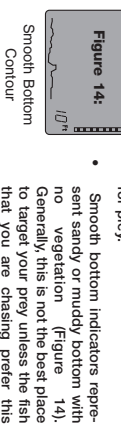


Figure 14:
Smooth Bottom Contour

- Rough bottom indicators represent heavy rock or vegetation covering the bottom (Figure 12). To avoid being snagged on the bottom, be careful not to get your lure or bait too close to the bottom.
- Variable indicators may indicate random rocks, stumps, grass, or logs (Figure 13). Random blinking indicators may represent a bottom scattered with rocks, stumps, or grass patches and should be fished more aggressively, as this may indicate prime hiding places for prey.
- Smooth bottom indicators represent sandy or muddy bottom with no vegetation (Figure 14). Generally, this is not the best place to target your prey unless the fish that you are chasing prefer this type of landscape.

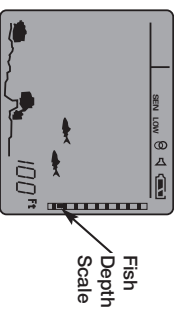
LED
The indicator LED on the Fish Finder will be lit when the power is on (Figure 10).

Depth Readout

The depth readout on the right bottom corner (Figure 11) will appear after the power is turned on and the transducer is placed in water between 3' and 120'. If the depth exceeds these parameters, the depth meter will indicate "----". This reading may also be frequent in water that is extremely dirty, or where heavy silt or mud bottoms occur.

Fish Location Scale Indicator

Figure 15:



Fish Location Scale Indicator

Use the Fish Depth Scale to measure the fish's depth location (Figure 15). This can be done by dividing the depth reading by 10. This number represents the value of each box. *(example, the depth is 100 feet, the fish symbol appears between the first and second box from the bottom. This means the fish is 10 feet from the bottom)*

Frequently Asked Questions?

- 1. What Type of Floats Can I use for the Transducer Cable?**
1 inch regular fishing bobbers have proven effective. A bright color is also helpful at alerting any boaters of the cable in the water so it is not damaged by a passing boat.
- 2. Why does the float need to be 6-10 inches from the transducer? Can it be more than that, or less?**
The recommended distance of 6-10 inches allows the transducer head to remain stable below the surface, even in rougher waters. The float can be adjusted to set the transducer deeper if desired, to get in below a layer of ice perhaps, but the difference in depth must then be added to what the unit displays.
- 3. How Long Will the Batteries Last?**
Total usage life of one set of batteries depends on the operational settings. The Battery Save Feature will extend battery life considerably, but will not give up to the second readings. The Backlight Feature, however, will significantly reduce the battery life and therefore should be limited to nighttime use only. The average overall life based on normal use is between 25 and 30 hours of operation.
- 4. Is My Fish Finder Waterproof?**
Although the FF3300(P)X is made to be water resistant, it is not made to withstand submersion in water. Follow the Care of Your Fish Finder Section to prevent accidental damage.
- 5. I'm Not Getting a Reading While Trying to "Shoot-Through" the Hull of a Boat/Canoe or Ice?**
Shooting-Through the hull of a boat/canoe or ice can be a difficult, as hidden air pockets will prevent you from obtaining a reading. Make certain that the hull or ice is solid from the surface to the water with no air bubbles and/or gaps. Shooting thru composite hulls (plastic) or cloudy ice is not possible as the tiny air bubbles are usually present in these situations. Refer to our website for more comprehensive instructions.
- 6. I'm Using the Unit for Ice Fishing, but the Depth Just Reads "----"?**
The FF3300(P)X's sonar components in the transducer head will not pulse below an ambient air temperature of 14° F. When operating the unit in temperatures at or below this level, keep the transducer warm until it can be placed directly into the water.
- 7. The Unit Keeps Shutting Off Automatically?**
The FF3300(P)X has an automatic power off feature to prevent battery drain if you accidentally leave the unit on. If the depth display reads "----" for 5 minutes, the unit will shut off automatically.

Understanding the On-Screen Images

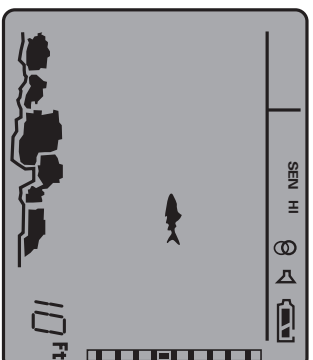


Figure 16:

- Depth of water is 10 feet
- Large fish return at 6 feet
- Bottom contour is ROUGH
- Battery save is OFF
- Sensitivity is set to HIGH
- Backlight is ON
- Fish alarm is ON
- Battery level is full

Understanding the On-Screen Images

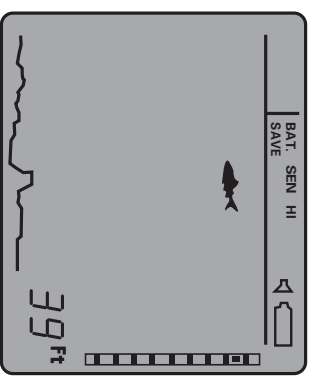


Figure 18:

- Depth of water is 39 feet
- Large fish return at about 8 feet
- Bottom contour is smooth
- Battery save is ON
- Sensitivity is set to HI
- Backlight is OFF
- Fish alarm is ON
- Battery level is VERY LOW

Understanding the On-Screen Images

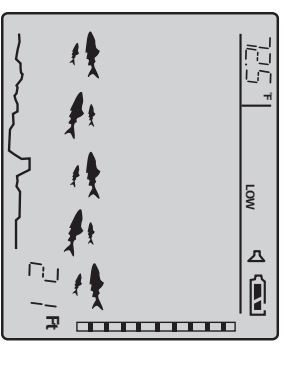


Figure 17:

- Large and/or small fish at bottom 10% range
- These continuous "fish" indicators should be used as reference only. These indicators could be the result of either heavy bottom vegetation and/or rough surface water waves. Fish icons appearing on the rest (90%) of the screen remain valid.
- Temperature is 72.5 deg. F (FF3300PX Only)
- Battery level is full
- Fish alarm is ON
- Backlight is OFF
- Sensitivity is set to LOW

NORCROSS 2 YEAR LIMITED WARRANTY

To be eligible for warranty coverage your fish finder must have a copy of the Warranty Registration Card on file with NorCross Marine Products, Inc., so be sure to submit the included registration card within 10 days of purchase. You may also register on our website.

NorCross Marine Products, Inc. warrants, to the original purchaser, the product to be free from defects in material and workmanship for the 24 months from the date of purchase. If the unit fails to perform as described in the product's written specifications, due to a defect in materials or workmanship, we will repair, at no charge to the customer for parts or labor. The customer, however, is responsible for any costs associated with returning the unit to the dealer for repair. This warranty does not cover damage caused by misuse, accident, failure to reasonably maintain, improper installation or use, or unauthorized alteration or repairs. NorCross retains the exclusive right to repair or replace the unit at its sole discretion, and holds this right as the exclusive remedy available to the customer against NorCross for any defect. This warranty is void if the unit is used for any purpose other than that intended by the manufacturer. NorCross will respond to all warranty claims within a reasonable time after receipt of the unit from the original purchaser, with such response time not to exceed thirty days without written notification of delay to customer.

To obtain warranty service, securely pack the unit, and mail prepaid, the return post to: NorCross Marine Products, Inc., Warranty Department, 1629 Prime Court - Suite 800, Orlando, FL 32809. A copy of the original sales receipt is required as the proof of purchase for warranty repairs. A copy of the Warranty registration card must also be on file with NorCross Marine Products, Inc. Please be sure to include your registration name, address, email address, and a daytime phone number within the package.

1629 Prime Court, Suite 700
Orlando, FL 32809
Ph: (407) 381-2614
Ph: (407) 422-0501
Fax: (407) 422-0501
Toll Free: 888-NorCross
Email: customerservice@norcrossmarine.com



SPECIFICATIONS

Unit Dimensions	1.57" H x 2" W x 2" D
Display Type	VitalView™ Liquid Crystal Icon
Display Window Size	15/16" x 5/8"
Backlighting	Green SoftGlow™ LED
Power Requirement	4 - "AA" Alkaline Batteries
Units of Measurement	Fat (Feet) and Meters for Non-Depth Range Max.
Depth Range Max.	120 feet (36 Meters)
Depth Range Min.	3 feet (1 Meter)
Transducer Frequency	200 kHz
Transducer Beam Angle	20 degrees
Operational Temperature Range	14° F to 122° F (-10 to 50 °C)

WARNING!!!!

This fish finder should not be used as a navigational aid to prevent grounding, boat damage, or personal injury. Always operate the boat at slow speeds in unfamiliar water, or if you suspect shallow water or submerged objects, as water depth may change too quickly to allow time for you to react.

WARNING:

Disassembly of the electronic components within this unit may result in exposure to lead in the form of solder, which is known to the state of California to cause cancer, birth defects, and other reproductive harm.