

# OPERATION MANUAL

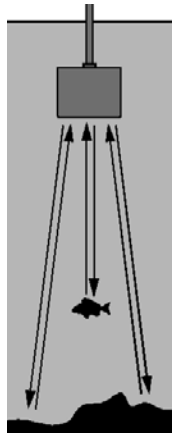
FishTrax™ 1X Fish Finder (FT1PX)



To ensure safety and many years of trouble-free operation of your product, please read this manual carefully before using this product.

## INTRODUCTION TO FISHTRAX™ INTELLIGENT SONAR

FishTrax™ Intelligent Sonar uses SONAR sound waves to detect depth, locate fish, and define bottom contour, composition and structure. Using specialized microprocessors, these sound waves are generated by the FishTrax™ display and sent to the FishTrax™ Sonar Sensor (*Transducer*). The sonar sensor, acting first as a “speaker”, emits these sound waves as a series of pulses. Then, microseconds later, the sonar sensor switches to a “microphone” and listens for the return of the pulses as they bounce off of objects in the water column (*referred to as “echoes”*). The “echoes” are sent back to the display where, using proprietary algorithms in the FishTrax™ software, they are analyzed for location, size, and composition. These signal are then arranged by FishTrax’s™ Human Interface Software and displayed in an easy to understand manner on the VirtuView™ Dot Matrix Display.



Scan This QR Code  
With Your Phone To  
View Our Product  
Orientation Video



Don't have a QR Code Reader? No Problem! Download One Today For Free In Your Phone's App Store.

## SAFETY INFORMATION

- Periodically wipe the face with a dry cloth. Do not use abrasives or solvents on this device.
- Only qualified personnel should perform repairs or servicing not covered in this manual.
- The LCD used in the product is made of glass. Therefore, it can break when the product is dropped or impacted.
- Keep this product away from heat sources such as radiators, heaters, stoves and other heat generating sources. Do not store in extreme temperatures above 150° F (65° C).
- Shade the LCD during storage. Do not expose LCD to direct sunlight for extended periods of time.

## NOTES, NOTICES, AND CAUTIONS



**WARNING:** Indicates a potential for property damage, personal injury or death.



**IMPORTANT:** Indicates potential damage to the device and tells you how to avoid it.



**NOTICE:** Indicates important information that helps you make better use of the device and tells you how to correct a performance problem.



**INFORMATION:** Indicates resources to obtain the proper information to help you make the most of your device.

### INFORMATION:



Read this manual completely before attempting to use or install your device. Visit our Customer Service Center on our website for advanced troubleshooting and technical support.

### WARNING:



This fish finder should not be used as a navigational aid to prevent grounding, boat damage, or personal injury. Always operate the boat at slow speeds in unfamiliar water, or if you suspect shallow water or submerged objects.

### NOTICE:



Because of interference caused by “sonar bouncing”, fish finders will NOT function properly in a swimming pool, bath tub, bucket, barrel, garbage can, or any body of water that has hard sides. It must be used in an open body of water to function properly.

## INFORMATION:



If you have questions about this device please visit our Customer Service Center on our website at [support.norcrossmarine.com](http://support.norcrossmarine.com).

**Warranty Details • Warranty Registration**  
**Troubleshooting • Product Knowledgebase**  
**Product Specifications • Parts & Accessories**  
**[www.hawkeyelectronics.com](http://www.hawkeyelectronics.com)**

## PARTS SUPPLIED IN PACKAGING

The following parts should be included with the display:

- Fish Finder Display
- Sonar Sensor (*Transducer*) with Integrated Harness and Cable Strap
- Sonar Sensor Float with Rubber Stopper

If any items are missing or damaged, please contact our customer service department.

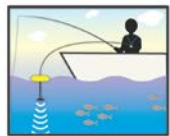
## FISHING PLATFORM CONFIGURATION

### NOTICE:



The HawkEye® FishTrax™ 1X's built-in expandability allows for the addition of accessories to adapt the fish finder to any fishing platform. Visit our website to see a complete listing of FishTrax™ accessories.

Boat, Kayak, Canoe, Float Tube, Bank, Dock, Ice, etc. You choose the platform, then visit our website at [www.hawkeyelectronics.com](http://www.hawkeyelectronics.com) and select the accessories to adapt your HawkEye® FishTrax™ Fish Finder to your fishing needs.



### IMPORTANT:



If you are going to be using the Fish Finder in Temperatures Below 20° F (-7 °C) you must use Lithium 'AAA' Batteries. Cold temperatures significantly reduce the power output of Alkaline batteries, which will inhibit the performance of the Fish Finder.

### IMPORTANT:



To ensure your FISHTRAX™ 1X remains water tight, coat the battery cover seal with petroleum jelly (*Vaseline®*) or silicon grease (*available at any dive shop*) each time you replace the batteries.

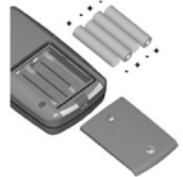
### WARNING:



Never mix different brands of batteries. Never mix new and used batteries (*alkaline, lithium, argon zinc, & rechargeable*). Never use damaged batteries. REMOVE BATTERIES DURING STORAGE. REMOVE DEAD BATTERIES IMMEDIATELY.

### Installing the Batteries:

1. Using a flat head screw driver, turn the screws on the battery cover counter clockwise to loosen.
2. Lift the battery door off the display housing.
3. Install 4 "AAA" batteries. Be certain to align the batteries as per the diagram within the battery compartment.
4. Reinstall the battery cover completely by reversing these steps.



### Connecting the Sonar Sensor Cable:

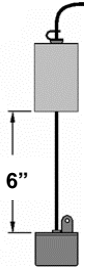
1. Align the pins on the sonar sensor cable plug with the plug on the display.
2. Firmly press the two plugs together until the red o-ring on the display connector is squashed between the plugs.
3. Tighten the locking nut on the display plug until it is snug by turning it clockwise. Finger tighten only, do not use tools.



## ADJUSTING THE SONAR SENSOR FLOAT

The Sonar Sensor float must be adjusted so that it is a minimum of 6 inches away from the sensor (*it can be further depending upon water conditions, see Note below*).

1. Pull out the rubber stopper.
2. Adjust float so that it is 6 to 10 inches from the sensor, or at your desired depth.
3. Replace the rubber stopper by pressing it firmly into the float.



### NOTICE:



In calm water, the sonar sensor can be set at a level which will provide the maximum amount of sonar coverage. In rougher water, the sonar sensor may need to be lowered into the water further to provide stabilized readings.

## USING THE SONAR SENSOR WITH THE FLOAT

Toss the sonar sensor and float assembly into the water at your desired fishing location.

- To toss, place the sonar sensor and float in your hand, and pitch underhand. Do not throw the sensor by the cable as this will cause unreparable damage. Before tossing, be certain that the cable is free from tangles and is not wrapped around anything.
- To retrieve the sonar sensor and float, simply pull in the cable being certain to neatly wind up the excess cable.

### IMPORTANT:



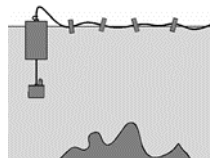
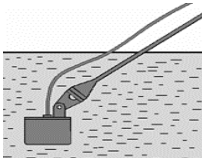
Do not allow the cable to sink to the bottom as it may become entangled in debris.



### NOTICE:



You can also use a pole to guide the sonar sensor to a desirable position or add a float kit (*available on our website*) on the cable to allow the cable to float on top of the water.



## REMOVING THE SONAR SENSOR FLOAT

If you find that you do not have a need for the sonar sensor float, it can be removed as follows:

1. Remove the rubber stopper from the cable by sliding the safety strap toward the plug and gently working it over plug.
2. Slide the cable through the center of the float toward the plug and gently work the plug through the center of the float in a rocking motion.

## USING THE SONAR SENSOR FROM A BOAT, KAYAK, CANOE OR FLOAT TUBE

### NOTICE:



The FishTrax™ 1X's built-in expandability allows the addition of accessories to adapt the fish finder to any fishing platform. Visit our website to see a complete listing of FishTrax™ accessories.

There are five methods that can be employed to use the fish finder from a boat.

1. Toss the sensor and float into the water as per the previous instructions.
2. "Shoot-Thru" the hull as per the instructions in the next section.
3. Attach the Sonar Sensor to the Side-Scan Adapter (*optional*) and use a pole or broom stick handle to scan for fish as per the fishing tip below.
4. Attach the Sonar Sensor to the Transom Mount Bracket (*optional*) and mount to the transom of the vessel's hull.
5. Attach the Sonar Sensor to the Transducer Arm Bracket (*optional*) and suspend from the transducer from the side of the vessel.

### INFORMATION:



By attaching the optional Side-Scan Adapter to an ordinary broom stick or paint roller handle purchased from a local hardware store, you can scan for fish suspended in the water column within 240 ft. (75 m) of your location. Attach the sensor to a handle, lower the sensor into the water, and slowly move the sensor in a manner that will allow the signal to search the desired location (*a sweeping motion similar to using a flashlight is most effective*). Keep in mind the sonar signal is emitted from the base of the sensor. Scan down, sideways, or any combination of the two. Remember, to get depth and bottom contour and composition readings you will have to aim the signal at a solid object within 240 ft. (75 m), however FISH readings will be accurate, even if the depth reading is "---".

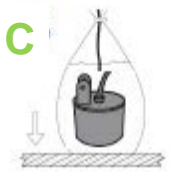
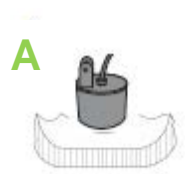


## USING THE FISH FINDER THROUGH A BOAT HULL

The FishTrax™ 1X's advanced sonar capabilities allow it to "Shoot-Thru" the bottom of a boat, kayak or canoe. The hull must be made out of solid fiberglass, or a maximum of 1/8" aluminum, and be in direct contact with the water, with no air pockets. The FishTrax™ 1X will not work through wood, plastic, or any composite material.

### To "Shoot-Thru" the Hull of a Boat, Do One of the Following:

- A. Place the sonar sensor in .5 inches of water against the hull bottom.
- B. Coat the face of the sonar sensor with petroleum jelly and press it against the hull bottom with a twisting motion.
- C. Place the sonar sensor in a plastic bag that is full of water and place against the hull bottom.



#### NOTICE:

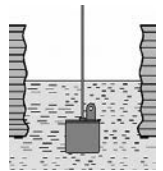


If depth readings appear as "---" while using one of these methods, place the sonar sensor directly in the water to verify that the fish finder is operating properly. If it operates properly while directly in the water, reposition the sensor in a new location in the hull, and repeat methods A, B, or C. These methods DO NOT work on all hulls and you may have to place the sensor directly in the water for proper operation.

## USING THE FISH FINDER FOR ICE FISHING

To achieve the best performance for ice fishing, you should cut a hole through the ice and place the sonar sensor directly in the water like the illustration to the right.

If you would like to check the area for depth or fish before cutting the hole, please follow steps 1 – 4 below precisely.

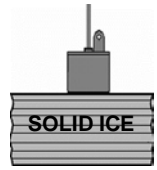


#### NOTICE:



To use this method, the ice **MUST** be clear (*usually referred to as black ice*), free from air bubbles, voids, cracks, etc.

1. Clear away snow to expose the ice surface.
2. Place a small amount of liquid water on the ice and set the sonar sensor on the water allowing the Sonar Sensor to freeze to the ice.
3. If there are any air pockets between the sonar sensor and ice, or the water below the ice, the fish finder will not work properly and will require you to try another spot, or cut a hole in the ice to use. You can also use the instructions in the "USING THE FISH FINDER THROUGH A BOAT HULL" section. Be certain not to allow the water to freeze around the sensor if you use the "plastic bag" method.
4. To remove the sonar sensor from the frozen ice, gently tap the sonar sensor at the base with your hand. If it will not come loose, spray a small amount of water on the ice surface around the base and repeat this step until the sonar sensor is easily removed.



**IMPORTANT:**



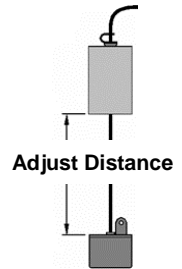
Never use a blunt object to strike the sonar sensor as this may cause damage to the sensitive internal components.

**USING THE VARIABLEZONE™ WATER TEMPERATURE SENSOR**

The VariableZone™ Water Temperature Sensor integrated into the sonar sensor will allow you to take temperature readings throughout the water column by enabling you to adjust the depth of the sensor.

**To utilize the VariableZone™ Feature:**

1. Increase the distance between the float and the sonar sensor.
2. After each adjustment, wait 1 minute before observing the temperature reading on the display.



**INFORMATION:**

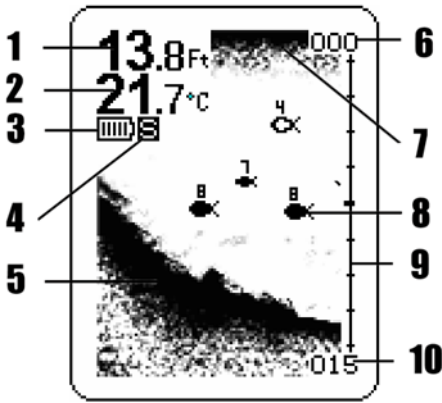


To increase your catch rate, find the optimal temperature habitat for the species you are targeting. Large changes in temperature may indicate an underwater current that could collect bait fish. For best results, fish your bait near this temperature change and mimic a distressed bait that is "caught up in" the current.



# GETTING TO KNOW THE FISHTRAX™ 1X

## UNDERSTANDING THE VIRTUVIEW™ LIQUID CRYSTAL DISPLAY



1. Water Depth
2. Water Temperature
3. Battery Strength Indicator
4. Simulator Indicator
5. Bottom Contour/Composition
6. Upper Limit
7. Surface Clutter
8. FishTarget™
9. Depth Scale
10. Lower Limit

## UNDERSTANDING THE BUTTONS



Zoom / Enter

V | ESC

Exit Menu / Backlight



Menu/Feature Setup





Power ON or Off / Screen Hold



Feature Adjustment

## TURNING THE FISH FINDER ON/OFF





1. To turn the fish finder ON, press and release the  button.
2. To turn the fish finder OFF, Press and Hold the  button for 3 seconds.

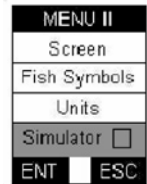
### NOTICE:



The fish finder has an automatic “power-off” feature to prevent battery drain if you accidentally leave the Fish Finder on. When the depth display reads “---” continuously for 5 minutes, the display will shut off automatically.

## SETTING THE FISH FINDER IN SIMULATION MODE

1. To place the fish finder in Simulation Mode, while the fish finder is ON, press and release the  button 2 times (*MENU II will appear at the top of the screen*)
2. Press and release the  button until Simulator is highlighted.
3. Press the  to turn ON the simulator mode ( will appear to the right of Simulator).
4. Press **V | ESC** to exit the menu and start running the simulator.
5. To turn the simulator mode OFF, repeat steps 1 thru 3 above.



### NOTICE:



All features are active in the simulator mode. Use the FishTrax™ simulator to learn how to use the fish finder. The simulator allows you to adjust features and settings like you are actually operating the fish finder. Please note that the temperature will be displayed as “---” unless the Sonar Sensor (*Transducer*) is plugged into the display.

## ACCESSING AND ADJUSTING THE FEATURES

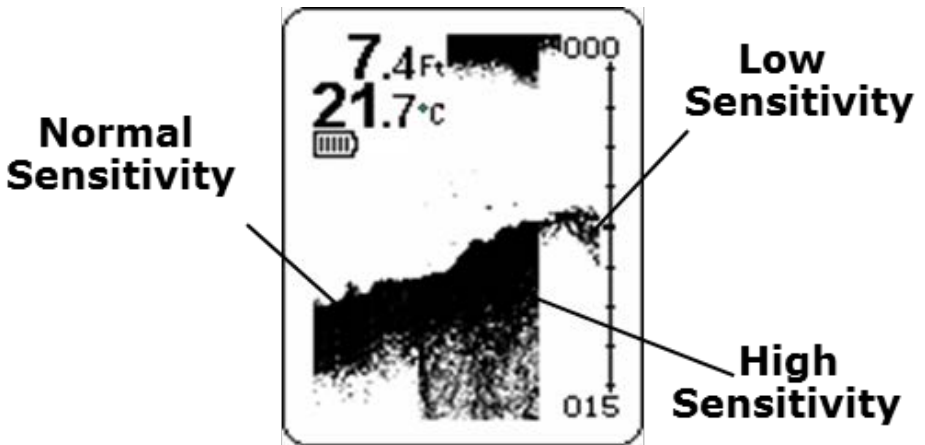
To simplify the operation of the FishTrax™ 1X many of the complex features such as gain (*power*), interference (*noise rejection*), sonar frequency and sonar beam *angle* are adjusted automatically. However there are several features that can be manually adjusted.

- A. Screen Detail (Sensitivity)
- B. Backlight
- C. Depth Range



- D. Bottom Zoom (*Bottom Lock*)
- E. Fish Alarm
- F. Depth Alarm
- G. Contrast
- H. Scroll Speed (*Chart Speed*)
- I. FishTarget™ (*Fish Symbols Depth*)
- J. Units of Measure

**A. ADJUSTING THE DETAIL DISPLAYED ON THE SCREEN**

Adjusting the amount of detail the shown on the VirtuView™ display is as simple as adjusting the fish finder’s sensitivity. There are 10 user selectable sensitivity settings to choose from. Select a higher sensitivity setting to show smaller sonar returns on-screen, or a lower setting to remove clutter from the screen. Adjusting Sensitivity also affects how sonar returns are identified as fish icon symbols - more fish will be detected at a higher setting, fewer at a lower setting.

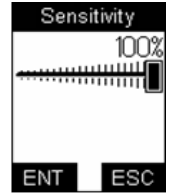


**To Adjust the Sensitivity:**

1. Press and release the  button 1 time (*MENU I will appear at the top of the screen*)
2. Press and release the  button until “Sensitivity” is highlighted.

MENU I	
Sensitivity	
Backlight	
Depth Range	
Alarms	
ENT	ESC

3. Press the **⊖⊗** to expand the Sensitivity Menu.
4. Press and release the **▶** button to increase the sensitivity, **◀** to decrease the sensitivity.
  - Press the **⊖⊗** to save the adjustment and exit the Sensitivity Setup.
  - Press **V | ESC** to cancel the adjustment and exit the Sensitivity Setup.
5. Press and release the **V | ESC** button 2 times to exit the menu and return to the fish finder mode.



### INFORMATION:



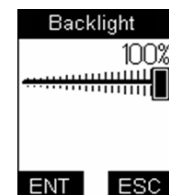
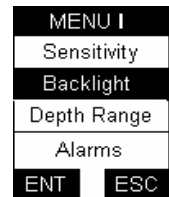
Which setting is the right setting? It greatly depends on the clarity and/or depth of the water. Very clear water allows for a moderate sensitivity setting. Conversely, dirty water requires a higher sensitivity setting to target detail but will increase irritating false readings. Targeting deep water fish generally requires greater sensitivity, especially in stained or dirty water. Salt and brackish water also require a comparatively higher sensitivity setting. While this analysis may seem confusing, the concept is simple. As the Fish Finder's sensitivity is elevated, a broader view and smaller details show on the screen. But, with a broader and stronger view comes more clutter and debris. The clearer the water, the less sensitivity needed to get accurate details and vice-versa.

## B. ADJUSTING THE DISPLAY BACKLIGHT

Turning the backlight feature ON will keep the screen illuminated all the time. This feature will greatly reduce the battery life of the Fish Finder, so it should only be used during low light conditions.

### To Adjust the Backlight:

1. Press and Release the **☰** button 1 time (MENU 1 will appear at the top of the screen)
2. Press and release the **▼** button until "Backlight" is highlighted.
3. Press the **⊖⊗** to expand the Backlight Menu.
4. Press and release the **▶** button to increase the backlight, **◀** to lower the backlight.
  - Press the **⊖⊗** to save the adjustment and exit the Backlight Setup.



- Press **V | ESC** to cancel the adjustment and exit the Backlight Setup.
5. Press and release the **V | ESC** button 2 times to exit the menu and return to the fish finder mode.

**NOTICE:**



Quick-Access to this feature is available by pressing the **V | ESC** button during normal fish finder operation. You can turn the backlight ON or OFF, however, to change the backlight intensity, you must access the setting through the MENU.

**C. ADJUSTING THE DEPTH RANGE DISPLAYED ON THE SCREEN**

You can set the display on the FishTrax™ 1X to automatically adjust the display range to the water depth, or manually set it to lock the display in a specific depth range.








Select AUTO to have the display automatically adjust the depth range for the detected water depth. Advanced users may want to manually select 5, 15, 20, 30, 60, 120 or 240 ft. to only see sonar echoes in those ranges. Keep in mind this locks the depth range of the display to this preset range and ONLY sonar returns from that range will be displayed.

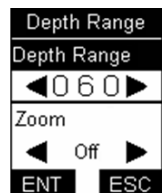
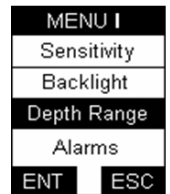
**NOTICE:**



The Depth Range setting is an advanced feature. For best results it should be set to AUTO. Only change the setting if you are only interested in sonar echoes in a specific depth range. In manual operation, if the water depth is greater than the depth range setting, the bottom will not be visible on-screen.

**To Adjust the Depth Range:**

1. Press and release the  button 1 time (*MENU I will appear at the top of the screen*)
2. Press and release the  button until “Depth Range” is highlighted.
3. Press the  to expand the Depth Range Menu.
4. Press and release the  button to highlight “Depth Range”
5. Press the  button to increase the depth range,  to lower the the depth range.
  - To set to AUTO, press  until Auto is displayed between the triangles.



- Press the **⊗** to save the adjustment and exit the Depth Range Setup.
  - Press **V | ESC** to cancel the adjustment and exit the Depth Range Setup.
6. Press and release the **V | ESC** button 3 times to exit the menu and return to the fish finder mode.

#### INFORMATION:



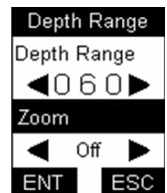
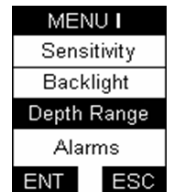
Experienced fisherman will tell you that many fish choose to hide along the bottom and ambush their prey as it swims by. Logs, tree stumps, rocks, ledges, etc. all provide excellent ambush locations. Uncovering these hiding places will prove invaluable to your fishing trips. Remember to keep an eye on the depth of your bait while fishing bottom structure as you do not want to snag it on the structure.

#### D. MAGNIFY BOTTOM CONTOUR AND STRUCTURE

The FishTrax™ 1X can be set to magnify the area around the bottom. This is especially useful to reveal fish and structure close to the bottom that may not be visible during normal operation.

##### To Turn the Zoom ON or OFF:

1. Press and release the **☰** button 1 time (*MENU I will appear at the top of the screen*)
2. Press and release the **▼** button until “Depth Range” is highlighted.
3. Press the **⊗** to expand the Depth Range Menu.
4. Press and release the **▼** button until “Zoom” is highlighted.
5. Press the **▶** button to turn the Zoom ON, press **◀** to turn the Zoom OFF.
  - Press the **⊗** to save the adjustment and exit the Zoom Setup.
  - Press **V | ESC** to cancel the adjustment and exit the Zoom Setup.
6. Press and release the **V | ESC** button 3 times to exit the menu and return to the fish finder mode.



### NOTICE:

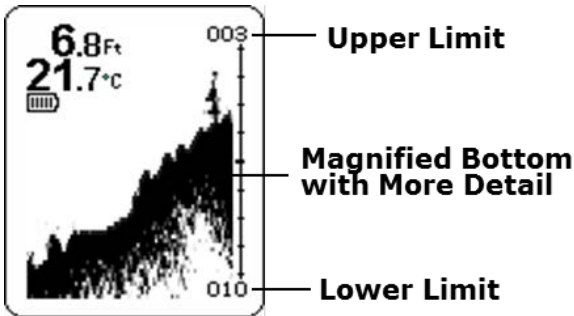


Quick-Access to this feature is available by pressing the **⊖⊗** button during normal fish finder operation. Pressing the **▲** or the **▼** buttons while in Zoom mode will manually adjust the Upper and Lower Limits. Press the **⊖⊗** button again to turn the Zoom OFF. The Upper Limit will be displayed as "000" when the Zoom is OFF.

### NOTICE:



When Zoom is set to On, the upper and lower Depth Ranges are automatically adjusted to keep the area above and below the bottom on the display.



### INFORMATION:






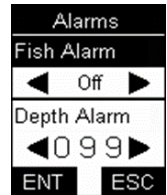
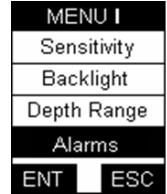
If you're targeting fish that prefer weed or structure, try this: If you're fishing from a boat establish accurate readings by using the techniques in this manual. Next, slowly move the boat around the fishing area while paying close attention to the bottom structure. Do not begin fishing until you discover the optimal spot for fishing (*using your knowledge about the desired prey's feeding habitat and the fish finder readings*). This may take a considerable amount of time, but if you find a secret spot it will be well worth it. This can also be done from shore by walking along the bank and tossing and retrieving the sensor out into the water in 5 foot intervals. **IMPORTANT:** When you find that secret spot, keep it to yourself. There is nothing that ruins a secret spot quicker than word of mouth.

## E. AUDIBLE NOTIFICATION OF THE PRESENCE OF FISH

You can set the FishTrax™ 1X to sound an audible alarm when fish are detected.

### To Turn the Fish Alarm ON or OFF:

1. Press and release the  button 1 time (MENU I will appear at the top of the screen)
2. Press and release the ▼ button until “Alarms” is highlighted.
3. Press the  to expand the Alarms Menu.
4. Press and release the ▼ button to highlight “Fish Alarm”
5. Press the ► button to turn the Fish Alarm ON, press ◀ to turn the Fish Alarm OFF.
  - Press the  to save the adjustment and exit the Fish Alarm Setting.
  - Press **V | ESC** to cancel the adjustment and exit the Fish Alarm Setting.
6. Press and release the **V | ESC** button 3 times to exit the menu and return to the fish finder mode.



### INFORMATION:




Leave the alarm on if you are using a castable bait so that you do not have to steadily watch for fish on the screen. If you hear the alarm, gently toss your bait at least 20 feet beyond the sonar sensor, allow the bait to drop to the depth of the fish alarm, and retrieve as recommended for the targeted species.

## F. SHALLOW WATER DEPTH ALARM

When turned on, the FishTrax™ 1X's shallow water alarm will notify you of shallow water by sounding an audible alarm and flashing “Depth Alarm!” on the display.

### To Adjust the Shallow Water Alarm:

1. Press and release the  button 1 time (MENU I will appear at the top of the screen)
2. Press and release the ▼ button until “Alarms” is highlighted.





3. Press the **⊘** to expand the Alarms Menu.
4. Press and release the **▼** button until “Depth Alarm” is highlighted.
5. Press the **▶** button to increase the depth of Shallow Water Alarm, press **◀** to decrease the depth of the Shallow Water Alarm.
  - To turn the alarm OFF, press and release the **◀** button until “Off” is displayed between the triangles.
  - Press and release the **⊘** button to save the adjustment and exit the Depth Alarm Setting.
  - Press and release the **V | ESC** button to cancel the adjustment and exit the Depth Range Setting.
6. Press and release the **V | ESC** button 3 times to exit the menu and return to the fish finder mode.

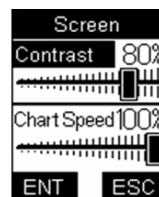
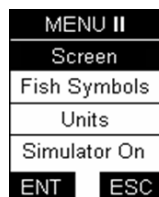


## G. DISPLAY CONTRAST

The FishTrax™ 1X allows you to adjust the display contrast to improve readability in a variety of lighting condition.

### To Adjust the Display Contrast:

1. Press and release the **☰** button 2 times (*MENU II will appear at the top of the screen*)
2. Press and release the **▼** button until “Screen” is highlighted.
3. Press and release the **⊘** to expand the Screen Menu.
4. Press and release the **▼** button until “Contrast” is highlighted.
5. Press and release the **▶** button to increase the Contrast, press **◀** to decrease the Contrast.
  - Press and release the **⊘** to save the adjustment and exit the Screen Adjustment Settings.
  - Press and release the **V | ESC** button to cancel the adjustment and exit the Screen Adjustment Settings
6. Press and release the **V | ESC** button 3 times to exit the menu and return to the fish finder mode.



## INFORMATION:



When the scroll speed is set to high, the FishTrax™ sonar will deliver quicker, less detailed data to the VirtuView™ display. A lower scroll rate setting will allow the FishTrax™ sonar to deliver more detailed returns to the VirtuView™ display.

## H. DISPLAY SCROLL SPEED (*CHART SPEED*)



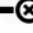


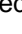
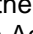
The data on the FishTrax™ 1X's screen is purposefully moving at a constant speed, scrolling from the right to the left. The incoming signals are displayed sequentially scrolling from the right side of the screen to the left. The right side displays what the FishTrax™ sees in that instant, and this data scrolls to the left giving you a depiction of what you have passed over. The scrolling speed can be easily changed, making it easy for the user to find a comfortable setting.

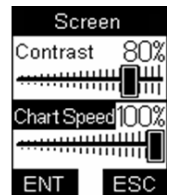
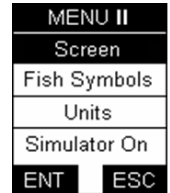
### NOTICE:



Slowing the Scroll Rate will help to conserve battery life and increase the useful life of your batteries.



### To Adjust the Display Scroll Speed:

1. Press and release the  button 2 times (*MENU II will appear at the top of the screen*)
2. Press and release the  button until "Screen" is highlighted.
3. Press and release the  to expand the Screen Menu.
4. Press and release the  button until "Chart Speed" is highlighted.
5. Press and release the  button to increase the Chart Speed, press  to decrease the Chart Speed.
  - Press and release the  to save the adjustment and exit the Screen Adjustment Settings.
  - Press and release the **V | ESC** button to cancel the adjustment and exit the Screen Adjustment Settings.
6. Press and release the **V | ESC** button 3 times to exit the menu and return to the fish finder mode.



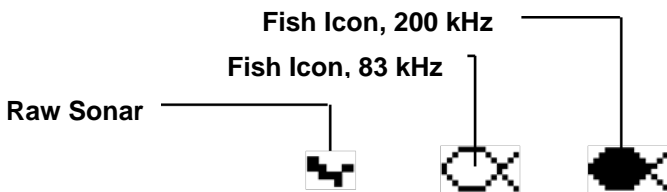
## NOTICE:










Pressing the  button during normal fish finder operation will freeze the screen allowing you more time to decipher the data. Pressing the  again will reenable the scrolling.

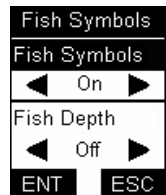
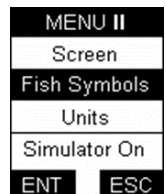
## I. FISHTARGET™ SYMBOLS AND DEPTH

The FishTrax™ 1X FishTarget™ feature displays fish icons and a numeric fish depth reading instead of fish arches to help identify fish. FishTrax™ sonar uses sophisticated software to analyze the "shape" of the sonar return from a suspended target to determine whether it is a fish or debris. When a fish is detected it is displayed as graphic fish symbol on the VirtuView™ Display. Icons are represented as follows:

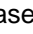


### To Turn the Fish Symbols ON or OFF:

1. Press and release the  button 2 times (*MENU II will appear at the top of the screen*)
2. Press and release the  button until "Fish Symbols" is highlighted.
3. Press and release the  to expand the Fish Symbols Menu.
4. Press and release the  button until "Fish Symbols" is highlighted.
5. Press and release the  or  buttons scroll between ON or OFF.
6. Press and release the  button until "Fish Depth" is highlighted.





Press and release the  or  buttons scroll between ON or OFF.

- Press and release the  to save the adjustment and exit the Fish Symbols Settings.
- Press and release the **V | ESC** button to cancel the adjustment and exit the Fish Symbols Settings.

- Press and release the **V | ESC** button 3 times to exit the menu and return to the fish finder mode.

#### NOTICE:



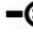






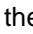


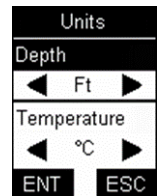
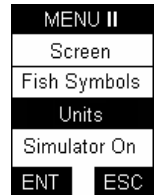
Pressing the  button during normal fish finder operation will freeze the screen making it easier to read the Fish Depth numbers. Pressing the  again will renable the scrolling.

## J. UNITS OF MEASURE

The FishTrax™ 1X can be set to display depth and temperature readings in English (Ft, °F) or Metric (M, °C) feature displays the depth Fish Identifier Icons. It can be vital when targeting fishing holding at specific depths.

### To Set the Units of Measure:

- Press and release the  button 2 times (*MENU II will appear at the top of the screen*)
- Press and release the  button until "Units" is highlighted.
- Press and release the  to expand the Units Menu.
- Press and release the  button until "Depth" is highlighted.
- Press and release the  or  buttons scroll between Ft (*Feet*) or M (*Meters*).
- Press and release the  button until "Temperature" is highlighted.
- Press and release the  or  buttons scroll between °F (*Fahrenheit*) or °C (*Celcius*).
  - Press and release the  to save the adjustment and exit the Fish Symbols Settings.
  - Press and release the **V | ESC** button to cancel the adjustment and exit the Fish Symbols Settings.
- Press and release the **V | ESC** button 3 times to exit the menu and return to the fish finder mode.



## CARE OF YOUR FISH FINDER

- Clean the sonar sensor and cable with fresh water and dry off before storing. Do not submerge and/or spray the fish finder screen/housing with water or use chemicals to clean. If necessary, wipe with a damp cloth.
- Remove the batteries from the fish finder to prevent battery leakage and corrosion.

3. Store the fish finder in the storage bag in a cool, dry place. Never leave it in temperatures over 120° F (49° C) as the extreme temperatures can damage the electronic components.

#### IMPORTANT:



Cold weather is extremely hard on the electrical components within the display housing. It is suggested that you keep the Fish Finder in temperatures above 0° Fahrenheit (-17° Celsius) during operation. The sonar sensor cable also becomes very stiff under cold conditions.

Excessive winding or unwinding under these conditions may cause irreparable damage. DO NOT WIND OR UNWIND THE CABLE IN TEMPERATURES BELOW 32° F (0° C).

## TROUBLESHOOTING AND FREQUENTLY ASKED QUESTIONS

24-Hour Technical Support is available online at [hawkeyeelectronics.com](http://hawkeyeelectronics.com). Search our online Knowledgebase for the latest troubleshooting and FAQ's, or post your own question for our support staff. For one-on-one support please email [customerservice@norcrossmarine.com](mailto:customerservice@norcrossmarine.com).

### **Understanding How the Fish Finder Finds Depth, Fish, debris, Bottom Contour/composition, etc.**

Greatly simplified, this fish finder is a combination of a speaker, microphone and stopwatch. It transmits a sound pulse from the sonar sensor, and then measures the time it takes for the "echoes" to return to the sonar sensor (*the fish finder "knows" that the speed of sound through water is about 4800 feet per second*). Fish, rocks, logs, weed, debris, the bottom, etc all "echo" the pulse at a different intensity. A built-in computer then organizes all of this information and shows it on a display screen in a manner that is easy for the user to understand. Depth Readout. The depth readout on the upper left corner will appear after the power is turned ON and the sonar sensor is placed in water between 2 feet and 240 feet (.5 to 75 meters). If the depth exceeds these parameters, the depth meter will indicate "---". This reading may also occur in water that is extremely dirty, or where there are heavy silt or mud bottoms. Sonar is a sound signal that travels through water. Sonar will not travel through air. Keep this in mind when using the fish finder, as the smallest air bubble between the sonar sensor and the water will cause the Fish Finder to not operate correctly.

### **Sonar Cross Talk**

If you experience incorrect depth readings on your Digital Depth Sounder display, but nothing on another fish finder screen on the same boat (*or vice versa*) then you are experiencing sonar cross-talk interference. The only real solution is to move the transducers further away from each other. This can help keep the transducer cones from intersecting, but because cones get wider as the depth increases, the problem cannot usually be completely solved by position only. Changing one of the sounders to another model that runs on a different frequency will solve the problem.

## **Nothing Happens When I Turn the Power On**

Make sure that you have installed a good set of batteries and aligned them as per the diagram within the battery compartment. You may also need to test the batteries in another device to ensure they are charged. If in doubt, replace the batteries with a set from a newly opened package.

## **The Depth Reading Is “---”**

First verify that the sonar sensor is plugged into the display housing properly by turning the display on and listening for a ticking sound from the sonar sensor. Make sure that you are operating the Fish Finder in depths between 2 and 240 ft. (.5 to 75 m). Be aware that the depth is measured from the sonar sensor, not the float. Also make sure that the water is not overly choppy, causing the sonar sensor to move around significantly. The sonar sensor must remain relatively stable to achieve optimal readings. When necessary, lower the sonar sensor to hang further from the surface of the water, providing more stability in rougher water.

## **I See Fish Under the Sonar Sensor, but Nothing Appears on the Display**

As with the depth reading, the fish finder will not detect any objects that are closer than 2 ft. from the sonar sensor. If you're fishing in water that is less than 3 feet deep, it is recommended to discontinue use of the fish finder.

## **The Depth Reading is Incorrect**

Make sure that you are pointing the sonar sensor perpendicular to the water when trying to obtain depth readings.

Extremely heavy vegetation may confuse the sonar of the fish finder causing it to misinterpret the depth. If you are certain that the readings are incorrect under these conditions, discontinue use.

## **I'm Not Getting a Reading While Trying to Shoot Through My Boat Hull or Ice**

Shooting through the hull of a boat/canoe or ice can be difficult, as hidden air pockets will prevent you from obtaining a reading. Make certain that the hull or ice is solid from the surface to the water with no air bubbles and/or gaps. Shooting through composite hulls (*plastic*) or cloudy ice is not possible as tiny air bubbles are usually present in these situations.

## **I'm Getting False Fish Indications**

The most common cause of false fish indications is extremely tall weed growth. If weeds grow taller than 50% of the total water depth in a particular area, the sonar will mistake it for fish. Trash & debris may also give false readings. Adjusting the sensitivity setting to the lowest level may reduce these false readings, but if they do not go away, it is suggested that you discontinue use of the fish finder under these conditions.

## **I'm Using the Fish Finder in a Swimming Pool and its Not Working**

Because of interference caused by “sonar bouncing”, the fish finder will NOT function properly in a swimming pool, bath tub, bucket, barrel, garbage can, or any body of water that has hard sides. It must be used in an open body of water to function properly.

## REPLACEMENT PARTS

Please check our website for replacement parts and accessories. If you need replacement parts that are not listed, please email our Customer Service Department at [customerservice@norcrossmarine.com](mailto:customerservice@norcrossmarine.com).

## WARRANTY

This device is covered by a 2 Year Limited Warranty. To be eligible for warranty coverage, you must register your product within 15 days of purchase. Visit our website for warranty details and to register.

### To Activate Your Warranty:

- Read and print out a copy of the warranty details for your records.
- Complete the registration form on our website.
- Make a copy of your original purchase receipt and staple it to this manual. *You will need to present it in the rare occurrence that you need to send your product in for service.*
- Complete the information below and store this manual in a safe place.
- *You can print additional copies of this manual from our website*

### INFORMATION:



To aid in maintenance and service, record the following:

Date of Purchase: \_\_\_\_\_

Place of Purchase: \_\_\_\_\_

Date of Online Warranty Registration: \_\_\_\_\_

Production Date Code : \_\_\_\_\_ (4 digit code located in the battery compartment)

### INFORMATION:



**MADE IN CHINA, Designed and Supported in the USA.** Tested to comply with FCC, CE & ROHS standards if applicable. Visit our website for compliance and warranty information. All Specifications and Prices Subject to Change Without Notice.

**NorCross Marine Products, Inc**

[support.norcrossmarine.com](http://support.norcrossmarine.com)

[support@norcrossmarine.com](mailto:support@norcrossmarine.com)

[www.norcrossmarine.com](http://www.norcrossmarine.com)

VER.4316

## WARNING:



© 2018 NorCross Marine Products Inc., All Rights Reserved. ALL unauthorized copying of the content of this document without the expressed written consent of NorCross Marine Products, Inc is strictly forbidden.

## NOTES